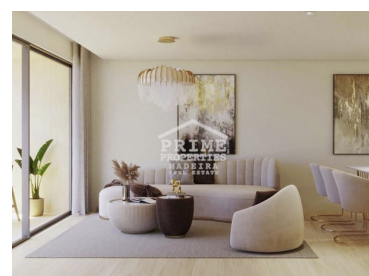




São Martinho - Apartment



 **1** Bedrooms
 **1** Bathrooms
 **105,3** Area (m²)
 **1** Garage
 **1** Swimming Pool



320 000 €
(EUR €)

Fabulous Modern Apartments For Sale

Located in the iconic area of Funchal, Barcelos View offers an unparalleled living experience. With the breathtaking Pico dos Barcelos on one side and the vast expanse of the sea on the other, this is more than just a residential building; it's a lifestyle choice.

Designed with meticulous attention to detail, Barcelos View features upscale materials, state-of-the-art insulation, and spacious, bright interiors. From the rooftop lounge with a pool, Jacuzzi, solarium, gym/living room, and barbecue area to the generous windows that offer panoramic views, every aspect is tailored to enhance your comfort and enjoyment.

With 24 modern apartments spread across five floors, ranging from T1 to T2 with areas between 57 and 177 m², Barcelos View offers versatility for families of all sizes. Its prime location just meters away from the iconic Miradouro Pico dos Barcelos allows residents to immerse themselves in the

T +351291624634 ¹ · T +351968293752 ² · E info@primepropertiesmadeira.com

Estrada Monumental Nº 454 9000 098 Funchal
AMI 11097

¹ (Call to national fixed network) | ² (Call to national mobile network)



tranquil beauty of Funchal's urban landscape, with the bay and Deserted Islands as a stunning backdrop.

Barcelos View is not just a place to live; it's a commitment to sustainability and quality of life. Its central location provides easy access to the heart of Funchal, as well as a wealth of amenities including supermarkets, cafes, restaurants, gyms, health services, pharmacies, and schools.

From its carefully curated interior design to its modern amenities, Barcelos View is a space designed for contemporary families seeking a harmonious blend of functionality and comfort.

Experience the best of Funchal living at Barcelos View Development.

Ideal as a home or for rental income.

Prices can alter in accordance to availability and phase of constuction development. Contact for up to date price lists.

NOTE: The areas indicated on the plan correspond to the usable areas of each space and are merely indicative and approximate to the final result. The images of the development presented here are merely visual anticipations of the final product. During the course of construction the development may, for technical or commercial reasons, undergo alterations or variations. The furniture and decorative items shown are merely indicative and are not included in the final product to be marketed.

Property Features

- Pool
- Garden
- Garage
- Drive way
- Views: Sea views, Mountain views, Pool view, Garden view
- Double glazing
- Main drainage
- Quiet Location
- Energetic certification: A
- Proximity: Airport, Golf course, Restaurants, City, Hospital, Pharmacy, Public Transport, Schools, Playground
- Jacuzzi
- Private condominium
- Basement
- Lift
- Electric garage gate
- Walking distance to beach
- Wifi Network
- Solar orientation: South

T +351291624634 ¹ · T +351968293752 ² · E info@primepropertiesmadeira.com

Estrada Monumental Nº 454 9000 098 Funchal
AMI 11097

¹ (Call to national fixed network) | ² (Call to national mobile network)